

## APPLE 'GOLDEN DELICIOUS'

Golden Delicious produces very sweet honey flavoured fruit, especially when tree ripened. This self-fertile variety crops regularly and heavily late in the season. Apples ripen yellow. It produces on both tips and spurs. Ripens May.



## APPLE GOLDEN DELICIOUS/GRANNY SMITH DOUBLE GRAFT



Double Graft Apple. Golden Delicious - golden yellow skin and sweet juicy flesh lovely for fresh eating, ripe around April.

Granny Smith - Bright green skin, crisp, tangy white flesh, ripe in late autumn. Stores well. Great for cooking or fresh eating.

Deciduous.

## APPLE GOLDEN DELICIOUS/ BRAEBURN DOUBLE GRAFT

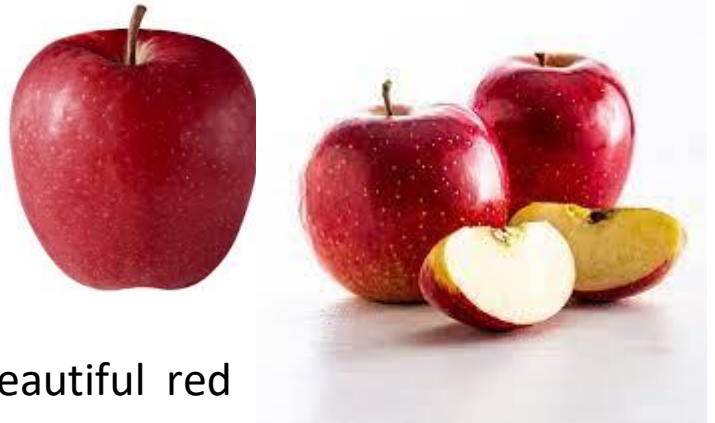
**Golden Delicious:** World-famous apple with great taste, texture, aroma and appearance. Honeyed flavour, very sweet especially when tree-ripened. Crops regularly and heavily late in the season. Harvest May. Apples ripen yellow. It produces on both tips and spurs.



**Braeburn:** This New Zealand apple is now one the world's top commercial selections. It has delicious, crisp, juicy flesh and superb sweet-tart flavour with a noticeably aromatic aftertaste. Red flecks on gold skin. Excellent keeper. Late season – harvest May.

# APPLE PACIFIC ROSE/NZ QUEEN- DOUBLE GRAFT

Double graft Apple. Pacific Rose is a New Zealand variety that has distinctive, clear rose-pink skin. The flesh is firm, crisp and juicy with a rich-sweet taste. A Gala and Splendour cross, this apple reaches maturity mid-season.



NZ Queen A beautiful red apple, NZ Queen has ruby red skin, is crisp, sweet and juicy. High in antioxidants and fiber. Unique to New Zealand, NZ Queen is aptly named as its heritage is from a cross of Royal Gala and Splendour.

# APPLE RED DELICIOUS/ GRANNY SMITH (double grafted)

**Red Delicious:** Conical/heart-shaped fruit with striking, bright red skin that is sometimes striped. The flesh is crunchy and very juicy with a mild, sweet flavour. Harvest March.

**Granny Smith:** Produces a large green fruit with a tart, well balanced flavour and crisp, juicy white flesh. A red blush appears on the skin when grown in colder areas. It



It crops late in the season and has a long picking period. Harvest May. Fruit has excellent keeping qualities. Tree is self fertile and a regular bearer that is suited to most climates. Tip bearing. Granny Smith is an excellent pollinator for other apple varieties.

# APPLE SPLENDOUR



Beautiful, large, carmine-red apples with creamy, very crisp flesh. Sweet and very low acid. Ripens late and hangs well on the tree. Fabulous winter keeper. Tip and spur bearing. Ripens may.

## APPLE SPLENDOUR/ GRANNY SMITH (DOUBLE GRAFTED)

**SPLENDOUR** - Beautiful, large, carmine-red apples with creamy, very crisp flesh. Sweet and very low acid. Ripens late and hangs well on the tree. Fabulous winter keeper. Tip and spur bearing. Ripens may.



**GRANNY SMITH** - : Produces a large green fruit with a tart, well balanced flavour and crisp, juicy white flesh. A red blush appears on the skin when grown in colder areas. It crops late in the season and has a long picking period. Harvest May. Fruit has excellent keeping qualities. Tree is self fertile and a regular bearer that is suited to most climates. Tip bearing. Granny Smith is an excellent pollinator for other apple varieties.



## APRICOT 'TREVATT'

Large, sweet, and juicy, this golden yellow fruit ripens mid to late in season. Perfect for eating as well as bottling, this variety is recommended for most areas.

5m x 4m

## **ALMOND 'SELF FERTILE'**

This variety is a self pollinating almond, producing gorgeous blossoms in spring time. Produces heavy crops of soft-shelled almonds with a good, sweet flavour. Self-fertile and hardy.



## **AVOCADO 'HASS'**

New Zealand and the world's most common variety. The Hass avocado is a crocodile skinned, large fruit weighing 200-300 grams. It is high yielding, and ripe from September through until March. It turns purplish/black when ripe. Hass is an 'A' type flowerer.



## **AVOCADO "REED"**

Reed is a large fruit, the size of a softball and often weighing over 400 grams. It is high yielding and is ripe from December through until April. It remains green when ripe. Reed is an 'A' type flowerer.



## AVOCADO 'BACON'



Bacon is a medium sized fruit weighing 150-250 grams. It is high yielding and is ripe from July through until September. It remains green when ripe. Bacon is a 'B' type flowerer. This variety has good cold tolerance.

## AVOCADO 'FUERTE'

Fuerte is the original, high quality Californian avocado. It is a medium sized fruit weighing 150-250 grams. It is medium yielding and ripe from October through until March. It remains green when ripe. Fuerte is a 'B' type flowerer. This variety has good cold tolerance.



***Avocado varieties are sometime referred to as being either 'A' type flowerers or 'B' type flowerers. The avocado flower has a period when it opens as a female, and a period when the same flower opens as a male. The 'A' type flowerer opens as a female on the first morning, closes and opens as a male the next afternoon. The 'B' type flowerer has the opposite pattern. ALL VARIETYS GRAFTED ON TO ZUTANO ROOT STOCK.***

## BANANA 'LADYS FINGER'

Produces sweet, thin skinned fruit that are ready when the fruit start to become yellow in colour. Best planted in a sunny position and sheltered from winds requiring fertile soils, regular feeding and plenty of moisture. Remove stems that have produced fruit and allow new suckers to emerge. May grow to between 3m and 4m in height.



## BANANA 'CAVENDISH'

The cavendish banana grown in NZ is not only yummy but also pretty to watch grow! Shorter than the lady finger plants, the appreciate and look great under a canopy. Pups have pretty variegated leaves.



## BANANA 'MUSA VELUTINA' (PINK BANANA)

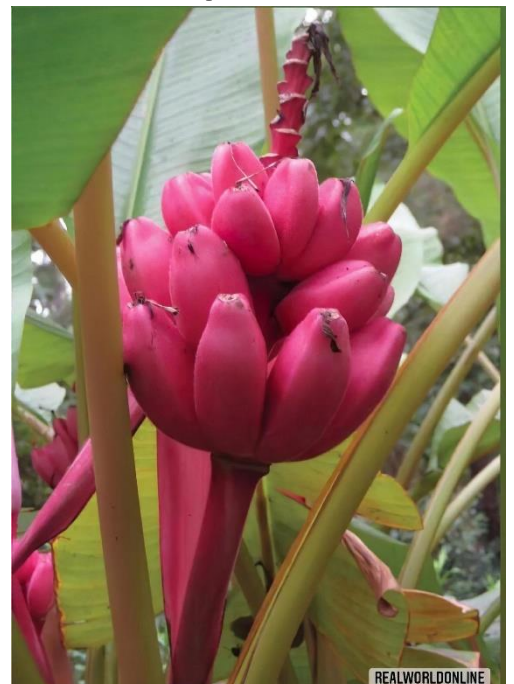
Pink banana, *Musa velutina*, is a dwarf ornamental banana, with spectacular pink self-peeling fruit. The fruit can be eaten, but watch out for the large seeds. Relatively hardy if grown in full sun.

### Position

Grow *Musa velutina* in moist but well-drained soil in full sun . Protect with a thick mulch to cover the roots over winter. Will also grow happily in a large pot.

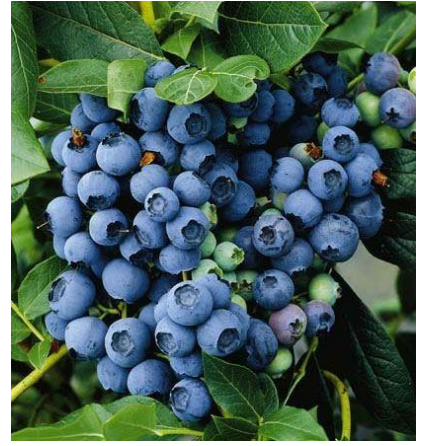
### Care

As with all *musa*/bananas, the nutritional requirements are high and plants will benefit from an effective fertiliser programme. All banana plants require regular watering during hot spells.



## BLUEBERRY 'POWDER BLUE'

Blueberry Powder Blue is a rabbiteye variety known for its vigorous growth and high yield of light blue, firm, and sweet-flavoured fruits. This variety is particularly well-suited for regions with long summers and is frost-hardy. The shrub typically reaches a height and width of 1.5m, making it an excellent choice for hedges or container gardening. The plant produces attractive pink flowers tinged with cream, followed by large clusters of fruit that ripen later in the summer. While self-fertile, it benefits from cross-pollination with another rabbiteye variety for optimal fruiting. For best results, plant in full sun in well-drained, acidic soil. Fertilise in the spring and ensure consistent watering throughout the summer.



## BLUEBERRY 'TIFS BLUE'

Outstanding rabbiteye blueberry. Large, light blue fruit which ripen late in summer. A vigorous grower and very productive. Self-fertile. Frost tolerant. Fertile, acidic soil. Fertilise in spring and water through summer.

2M X 1.5M Wide



## BLUEBERRY 'WHITU'

- 3-year old plant may yield 500g per plant
- Loaded with antioxidants - brain food
- Rabbit-eye variety. Can be grown New Zealand wide
- Attractive every season and Great in smoothies, in salads, baking and desserts

Attractive all year round: Spring - Lily of the Valley like flowers, Summer - delicious fruit, Autumn/Winter - bronze tonings. Ideal in a container, as a hedge or as a stand-alone specimen.







## CHERRY 'LAPINS'

Large dark red fruit with firm juicy flesh. This precocious variety is now a commercial mainstay in many areas. Fruits in warmer areas of New Zealand, ripening Mid-late season. Self-fertile.

## FEIJOA APOLLO

Apollo fruit are medium to large size with excellent flavour, Early season. Partially self fertile, so will produce some fruit if planted alone, but will produce larger crops of bigger fruit if planted with another variety nearby. Vigorous upright growth habit.



## FEIJOA SELLOWIANA



Will form a hardy screen whilst supplying you with delicious fruit that can be eaten fresh or used in preserves, jams or jellies. Decorative red flowers are followed by the fruit in autumn. Great for hedging and screening. Self-fertile.

# FEIJOA GEMINI

A high yielding hardy variety. Self-fertile but fruits best with cross pollination and produces large, oval-shaped fruit with excellent flavour and texture. Plant in a sunny position where soils are fertile and free-draining. Fruit are ready to harvest towards the end of March and into April.



## GRAPE 'SCHUYLER'

Bunches of very sweet black table grape with a slight currant flavour. Not seedless. Deciduous woody vines known to live for 70 years and are moderately fast growing. Large deeply lobed leaves which turn beautiful red tones in autumn. Good disease resistance.

## GRAPE 'ALBANY SURPRISE'

Heavy cropper with medium-sized bunches of large, juicy, aromatic and spicy bluish-black berries with a jelly texture. Hardy and disease resistant. Suitable for wine production. Mid to late season.



# LEMONADE LEMON

Amazing citrus variety: looks like a lemon but tastes like lemonade! A favourite with children, sweet with a refreshing tang. An attractive shrub, reliably producing fruit that ripens throughout the year. Self-fertile, few seeds. Grafted onto trifoliata rootstock for enhanced vigour, disease resistance and earlier fruiting. Superior to cutting-grown plants.



# LEMON YEN BEN

Lemon Yen Ben. A true lemon variety bearing basket-fulls of large oval shaped fruit with a distinctive sharp acidic flavour. Very juicy and has few seeds. The skin is fragrant and firm. Plant in the sun in well drained soil.



# MEYER LEMON

Hugely popular variety as the most cold hardy lemon variety. Low spreading tree habit with few thorns. Large juicy smooth-skinned fruit. Once tree is established, it will fruit all year round. Meyer lemons are thought to be a lemon crossed with either a mandarin or orange, so is a sweeter type of fruit, with a lemon-like appearance and flavour.



## LIME TAHITIAN

Sprouting a small, round and pale greenish yellow fruit with a juicy pulp, Tahitian Lime is sure to add some zest to your favourite recipes and drinks. With a distinct lime aroma and flavour this is a must have for culinary or beverage needs. This vigorous hardy tree is a cross between a Mexican lime and lemon, thus is almost as cold tolerant as lemons.



## LIME BEARSS

A hardier hybrid of the Tahitian lime with small, thin skinned, deep green seedless fruit which turns lime-yellow at time of maturity. A great lime because of the high juice levels making it ideal for drinks and cooking. Plant in full sun in a warm position sheltered from wind and frost. Great for gardens or pots and planters. Ripens March to September. 2m X 2m



## LIME 'KAFFIR'

A popular citrus, with aromatic leaves that are used extensively in Asian dishes. Forms an evergreen shrub with attractive, lobed dark green leaves. Fruit has rumpled skin, with astringent rind that is candied or used as a condiment. Self-fertile, few seeds. Grafted onto trifoliata rootstock for enhanced vigour, disease resistance and earlier fruiting.



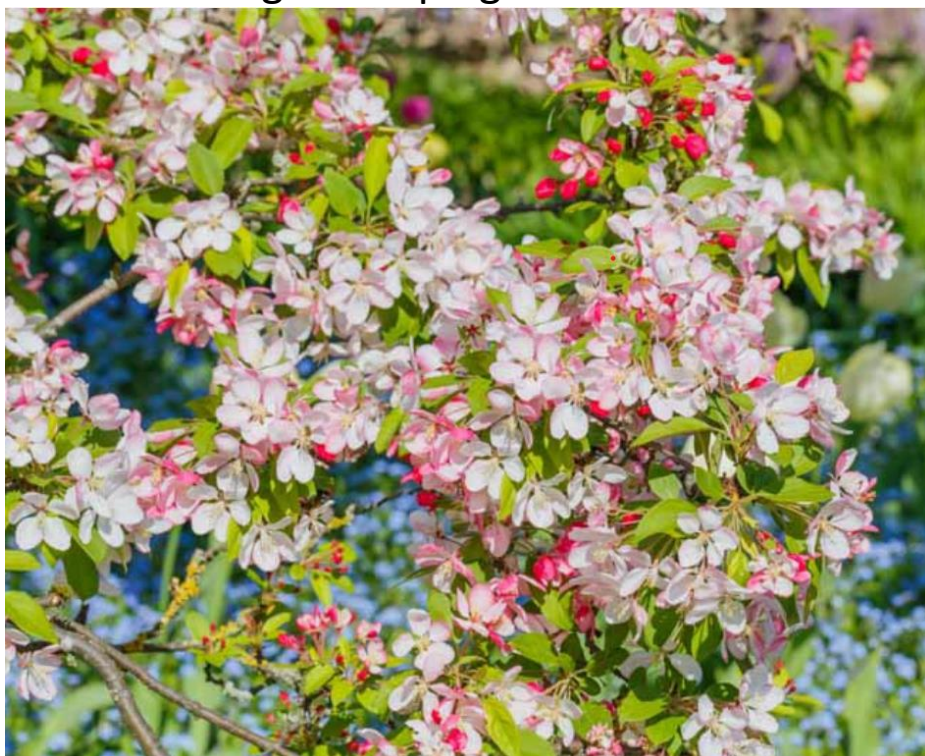
## **MALUS JACK HUMM - CRABAPPLE (to 4mH X 3mW)**

Small deciduous tree with a beautiful display of bright crimson red fruit, flushed with yellow-orange, during autumn and well into winter. Prefers a sunny position in any fertile, well-draining soil, protected from strong winds. Frost hardy. Tolerates quite dry conditions once established.



## **MALUS GORGEOUS - CRABAPPLE (4mH x 3mW)**

Large white star shaped flowers cover the tree followed by crab apples that are glossy red with a slight tinge of orange. Prefers a sunny position in any fertile, well-draining soil, protected from strong winds. Frost hardy. Tolerates quite dry conditions once established. Great for jams & jellies and a substitute for the larger weeping cherries.



## MANDARIN MIHO “SATSUMA”

Easy peel, cold hardy Satsuma mandarin with heavy crops of juicy, mild flavoured seedless fruit. Slower growing and well suited to growing in containers. Very early to ripen June-July.

3m x 3m



## MANDARIN ‘SILVER HILL’



'Silverhill' has easy peel, thin smooth rind and attractive, flat shaped, seedless fruit. The fruit is low in acid and therefore really sweet and juicy. Just delicious for a healthy snack in the winter. Easy to grow in a sunny, well drained spot in the garden or a container. Evergreen. 1.5m x 1.5m

## SATSUMA MANDARIN

Satsuma is the original winter-fruiting mandarin - a seedless variety with thin, easy peel skin. Frost tolerant. Flowering in summer/spring and fruiting May - July.



# STAR RUBY GRAPEFRUIT

Produces abundant crops of juicy, red-fleshed pleasant flavoured fruit with yellow skin. Plant in a sheltered, sunny position. Fruit holds well on tree. Ripens August-November.



# NASHI PEAR HOSUI & KOUSUI (Double graft)

**Hosui:** A reliable cropper, producing large crops of large, russeted, golden-brown fruit. Excellent eating with sweet, juicy flesh with a good acid balance and fine texture. Mid-season, fruit will ripen slightly earlier than 'Nijisseiki' in February/March. Fruit stores well for 2-3 months.

**Kosui:** Medium-large, round fruit with golden-brown skin. Very sweet with juicy, crisp flesh. Considered more flavoursome than 'Hosui'. Ripens late January-February. Good for freezing, preserving and eating fresh.



Tree grows approximately 6m high x 4m wide. Good for espalier training. Prefers a sunny and sheltered position in moist, well drained soil. Water well during dry periods and while fruit is developing.

## NECTARINE FANTASIA

An excellent late cropper of large, attractive fruit with good flavour. Skin bright-red over yellow flesh. Lower chilling requirement than other varieties. Great for dessert or bottling. Freestone. Ripens February/March.



## NECTARINE FIREBRIGHT

Grown throughout NZ this popular and vigorous Nectarine ripens quite early in summer. The fruit are strongly blushed red over yellow skin. The flesh is very tasty and semi-freestone. Plant in a sunny well drained spot. Self Fertile. Deciduous.





## NECTARINE SNOW QUEEN

produces one of the sweetest and juiciest nectarines, with freestone fruit that has delicious snow-white flesh and red and yellow skin. The pink blossoms of *Prunus persica* var. *nectarina* 'Snow Queen' appear in the spring, and its leaves turn yellow in the autumn. The fruit ripens from early to mid-summer, and *Prunus persica* var. *nectarina* 'Snow Queen' is self-fertile.

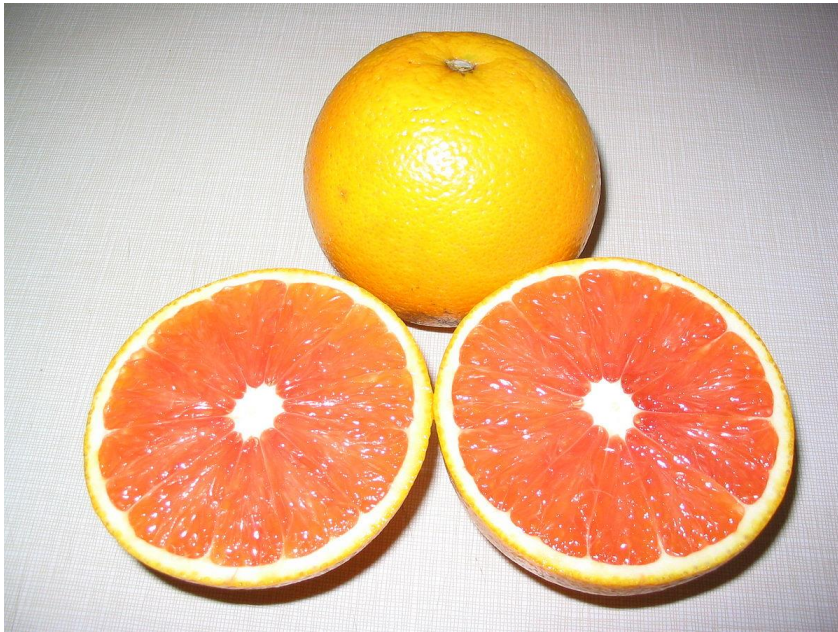


## ORANGE 'BEST SEEDLESS'

A good quality NZ orange with sweet and juicy, virtually seed-less fruit. Ripens from September onwards. Chock full of Vitamin C. Oranges are happiest in a sunny well drained position with protection from harsh frost. Evergreen.



## ORANGE "CARA CARA"



Distinctive rich pink flesh. Flavour is low acid and sweet, and has more depth and richness than that of the traditional navel. Virtually seedless. Needs plenty of sun, warmth and protection from hard frosts.

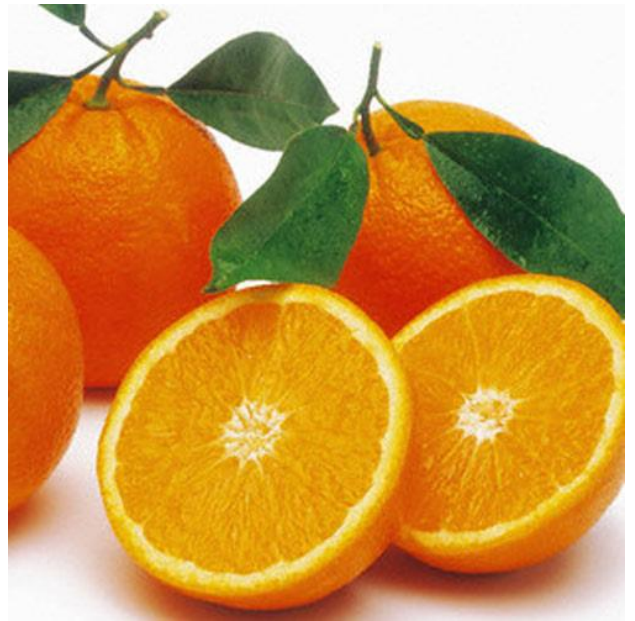
## ORANGE "FUKUMOTO"

Fukumoto' is an attractive Navel orange with large round fruit with quite a strong reddish tinge to the rind. Sweet tasting and delicious it ripens in late winter. Quite a compact grower. Plant in the sun in well drained fertile soil and protect from harsh frost. Evergreen.



## ORANGE 'PARENT NAVEL'

Produces good sized, seedless fruit with easy peel skin, sweet, juicy having an excellent flavour. They ready to stary picking in winter (July-Aug) and through into spring. Best grown in a sunny position that is sheltered from heavy frosts where soils are fertile, moist especially whilst in fruit and free-draining. Apply mulch to help prevent the loss of moisture during warmest months. Grows to between 2.5m and 3m.



## OLIVE EUROPAEA J2

A top producing commercial variety good for both oil and pickling. It produces heavy crops of good sized olives in Autumn. Evergreen.



## OLIVE J5

A top producing commercial variety. This NZ North Island selection produces heavy reliable crops of excellent sized fruit, proving to be one of the best varieties. Good for oil and pickling. Frost tolerant. Grows to H 3m x W 3m.



## OLIVE RAKINO

Providing both ornamental and fruiting benefits *Olea Rakino* is a shapely, small, open, tree suitable for both inland and coastal situations. A prolific summer fruiter, its flavoursome fruit is ideal for preserving. Evergreen. 3M X 3M



## OLIVE 'ASCOLANO'

The fruit of *Olea europaea* 'Ascolano' is large and has small pits, making it excellent for use as table fruit since the olives are quite sizable. It is also well-suited for use in hedges, screens, or as a lining for avenues and driveways. Additionally, *Olea europaea* 'Ascolano' is frost tolerant.



## OLIVE VERDALE

French olive, good for pickling. It's a small grower used often for hedging and for screening, getting to around 4m tall. Self-fertile.



# PEACH PARAGON



Widely grown New Zealand commercial and home garden peach of yesteryear with sweet, yellow juicy flesh in mid season. Fine texture and yellow skin. Clingstone. Regular and heavy cropper, bearing from a young age. Ripening January- February.

# PEACHARINE

This is actually a Peach/Nectarine cross with the advantage of being 'fuzzless' and bringing you the best of both delicious fruits. Medium to large fruit with smooth skin. Sweet and juicy yellow flesh. Ripens towards the end of summer. Self-fertile.



# PEACHCOT

Reputed to be a peach/apricot cross. Golden late season fruit that are very sweet and tasty with a firm, meaty texture. An attractive red blush on the skin develops on the sun-exposed side of the fruit. Late season variety. Self fertile.



## PEACH 'BLACK BOY'

Port-wine flesh, very sweet and juicy. Popular for eating fresh off the tree and bottling. Freestone. Skin is red to black. Heavy cropper, shows some resistance to leaf curl. Great home garden peach. Ripens March/April.



## PEACH 'RED HAVEN'

An enduring favourite amongst horticulturists and home gardeners as it is such a "good doer". Firm, yellow fleshed medium to large size fruit with an excellent flavour. Bottles well. Shows high resistance to leaf curl. Freestone. Deciduous. *Suitable for warmer areas including Auckland/Northland*



## PEACH 'TASTY ZEE'

An attractive, white-fleshed peach with excellent quality. Produces commercial grade peaches that are very sweet, firm and juicy, freestone. Used for fresh fruit and drying. Late-season maturity.



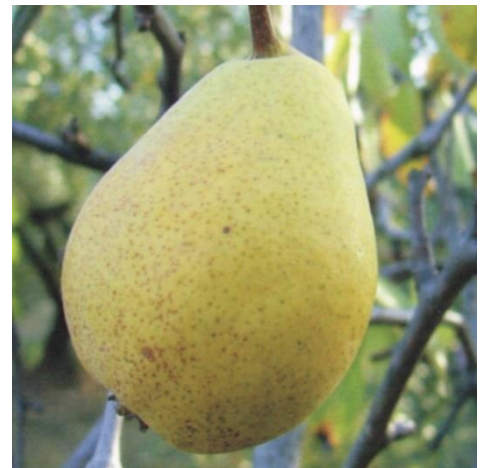
## PEACH 'GOLDEN QUEEN'

This classic variety needs no introduction. Originates from 1908 - New Zealand. A true favourite for bottling and an excellent eater. Firm deep orange flesh and deep yellow-orange skin. Fruit is slightly flat. Clingstone. Late season.



## PEAR 'TRIUMPH/WINTER NELIS' (Double Graft)

Double grafted Pear. Triumph, Distinctive medium to large totally light yellow green pear. Looks like a lumpy Williams bon Chretien. Ready late February/March. Winter Nelis, Good flavour, light russet skin and long keeping dessert pear. The flesh is firm but fine, sweet, and juicy, with good rich flavour; useful for cooking and bottling as well as being a very good fresh eating pear. Ripens March.



## PEAR 'BON CHRETIAN/BEURRE BOSC' (Double graft)

Double graft Pear. William bon chretien, Early season. A large, greenish yellow fruit, smooth skin, classic if slightly dumpy pear shaped. The flesh is smooth and moderately juicy. The flavour is neutral but sweet. Ripeness is sometimes hard to determine. Very good for bottling and cooking. Beurre bosc, Heavy crops of fruit with sweet, rich flavour. Large size, russet skin. Ripens in March



## PEAR 'BEURRE BOSC'

An attractive-looking pear with good sweet flavour and reliable crops. Fruit has a golden russet colour, and is sweet, buttery and juicy. Self-fertile. Pollinate with Bon Cretien or Winter Nelis for an extra boost. Mid season cropper, ripens February/March. 6m x 4m. Moist soil. Full sun. Deciduous.





## PEAR 'WILLIAM BON CHRETIEN'

Also known as the Bartlett Pear. Large long necked, green-yellow fruit, that is ideal for eating and bottling. Fruit will naturally fall in February and will keep up to 3 months. Good pollinator. Early season. Pollinators winter Nelis, beurre bosc.



## PEAR 'WINTER NELIS'

A very good late eating pear with excellent storage. Small green fruit with reddish russet patches and buttery, rich flavoured flesh. Very hardy but best with warm site. A good pollinator. Tree habit is sparse and spreading.

POLLINATION: Beurre bosc, Bon Cretien, Conference.



## PERSIMMON 'FUYU'

The most popular and main commercially grown variety. Medium to large deep orange-red fruit that is non-astringent, sweet and excellent quality. Skin is tough and glossy. Vigorous tree, branches drop in old age. Ripens May-June.



## PLUM 'BLACK DORIS'

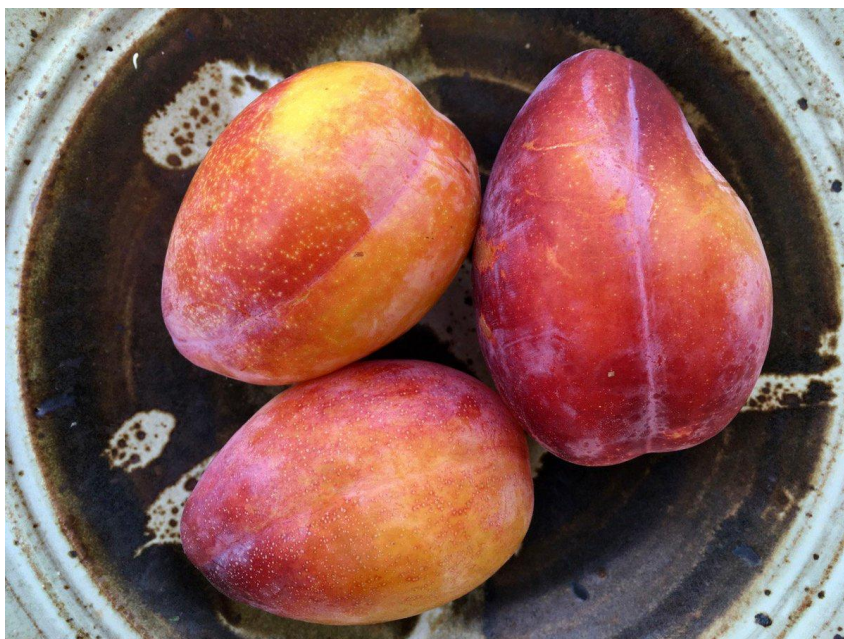
Excellent all purpose plum. Fruit is of medium size, with purple black skin and dark red sweet, juicy flesh. Vigorous, upright tree habit. A Cross variety. Mid season, Late January through February.

Needs a pollinator – billington, elephant heart, santa rosa.



## PLUM LUISA

This fruit tree produces 5-petalled pure white flowers in early spring followed by oval edible fruit. The fruit has yellow to orange skin, yellow flesh and is very sweet and juicy. This tree is self-fertile so it will not need another tree to produce fruit. It's one of the sweetest plums.



## PLUM 'OMEGA'



Green and red-skinned, red-fleshed, large, high-quality dessert fruit. The fruit is very juicy and sweet. A good all-rounder. A reliable and heavy cropper. Partially self-fertile although best to pollinate with 'Billington', 'Burbank', 'Duff's Early Jewel', 'Elephant Heart' or 'Santa Rosa'. Ripens February/March. 3M X 5M

## PLUM SANTA ROSA



It is among the highest flavoured plums in the world. Medium to large purple skinned fruit with yellow tinged pink, juicy, tangy flesh. Early to mid season. Self fertile. Ripens January/February.

## PLUM BILLINGTON

Early plum with dark red skin and flesh. Crops heavily around Christmas. All purpose plum with good, sweet flavour. Great to eat, bottle, freeze or make into jam. Self fertile. 6m



## PLUM 'SATSUMA'

A mid-season variety that produces medium sized, round, heart-shaped fruit. Red over green skin and red, rich-flavoured sweet flesh. Used for dessert or jam. Self fertile but better when pollinated with another variety of plum such as Santa Rosa. Harvest in February.



## **POMEGRANATE ‘WONDERFUL’**

This fruiting pomegranate produces large deep purple-red fruit with deep crimson juicy flesh very high in antioxidants. Good for juicing and eating fresh. The tree is vigorous and productive, with stunning flowers. Grows best with cold winters and long hot, dry Summers. The fruit may not ripen if the summer season is too cool or too short.



## **TAMARILLRO ‘Red’**

A popular subtropical tree that produces red (bronze) egg-shaped fruit. Tamarillo has quite a tangy and sweet taste and it is often compared to kiwifruit, passionfruit and guava. The first lot of fruit around 18months after planting. Protect from winds and frost.



## TANGOR 'UGLI FRUIT'

It is a vigorous rounded tree and carries good crops of medium to large bright orange fruits that mature in September/October. The skin is thick and course but peels easily. The flesh is deep orange and has a pleasant eating quality and distinctive flavour. A great tasting, seedless, very juicy fruit. Needs a warm sheltered and well drained position.



## TANGELO SEMINOLE



Hybrid of Grapefruit and Tangerine that yields high amounts of large fruit that is semi-flat and thin skinned. Fruit is red/orange and ripens during July-October. Flesh is juicy, sweet with a hint of sharpness.  
3M X 3M

## WALNUT *Juglans regia* 'Rex'

Best main crop commercial cultivar with exceptional health values. A small nut with good seal, storage ability, colour and taste. A smaller, more compact tree, easy to manage and with an excellent yield. Some resistance to walnut blight. Ripens autumn.

*Be especially careful not to over-water these, they hate wet feet!*



